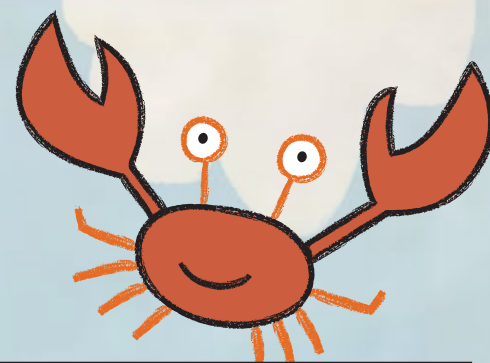


Young children face many dangers around open water environments like lakes, rivers, oceans, ponds, and even shallow water features. The primary dangers stem from a combination of the child's curiosity and lack of understanding and knowledge.

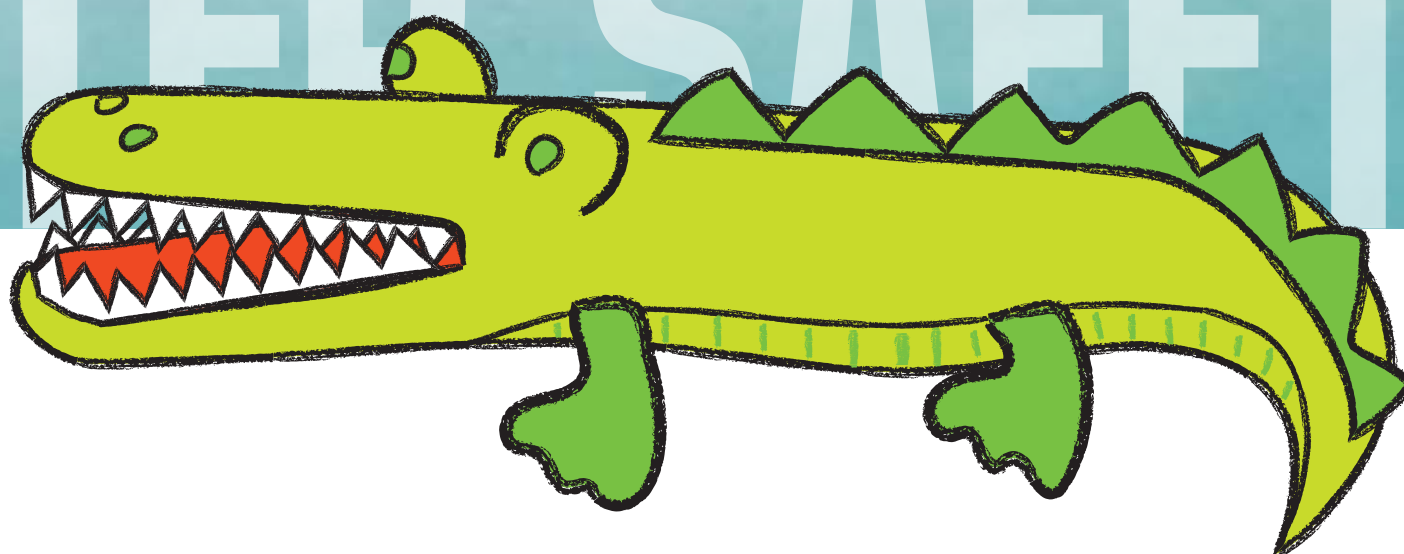


WHAT CAN PIP AND ANNIE TOUCH?



☐ YES

☐ NO



REMEMBER:
ADULT
SUPERVISION AT ALL TIMES



For further information about
Deaf Children Australia
deafchildrenaustralia.org.au/puggles
03 9539 5300 or email
communications@deafchildren.org.au

puggles
deafchildrenaustralia.org.au

**OPEN
WATER.**

**Deaf
Children
Australia.**

Swim
COACHES & TEACHERS
AUSTRALIA
Sunnyskyes

PROUDLY SUPPORTED BY THE PHILIPS FOUNDATION