

EVERYDAY AUSLAN SIGNS



HELLO

Using your dominant hand make a flat hand with your palm facing away from you. Starting at chest height, make an arc shape with your hand - like the shape of a rainbow.



WELCOME

Start by holding both hands in front of you slightly with palms facing upwards. Bend your fingers to make a closed fist twice.



FRIEND

Use your dominant hand to cup over your opposite hand. Rock your hands back and forth.



PLEASE

Using your dominant hand, bring your hand so your fingertips are touching your chin. In one motion, move your hand forward whilst simultaneously curling fingers to make a fist.

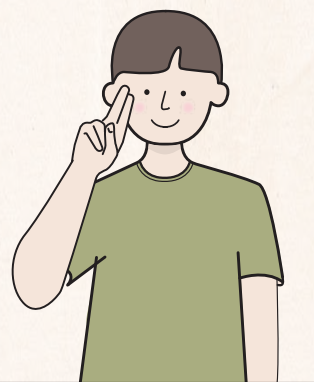


MY NAME IS...

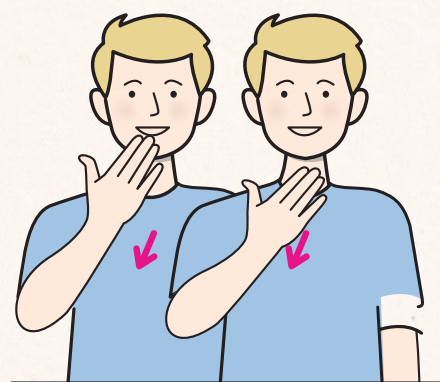
1 Use your dominant hand and place it on your chest.



2 Using the same hand make a fist with your index and middle finger pointed together. Bring your hand up so that your fingertips are resting on your forehead.

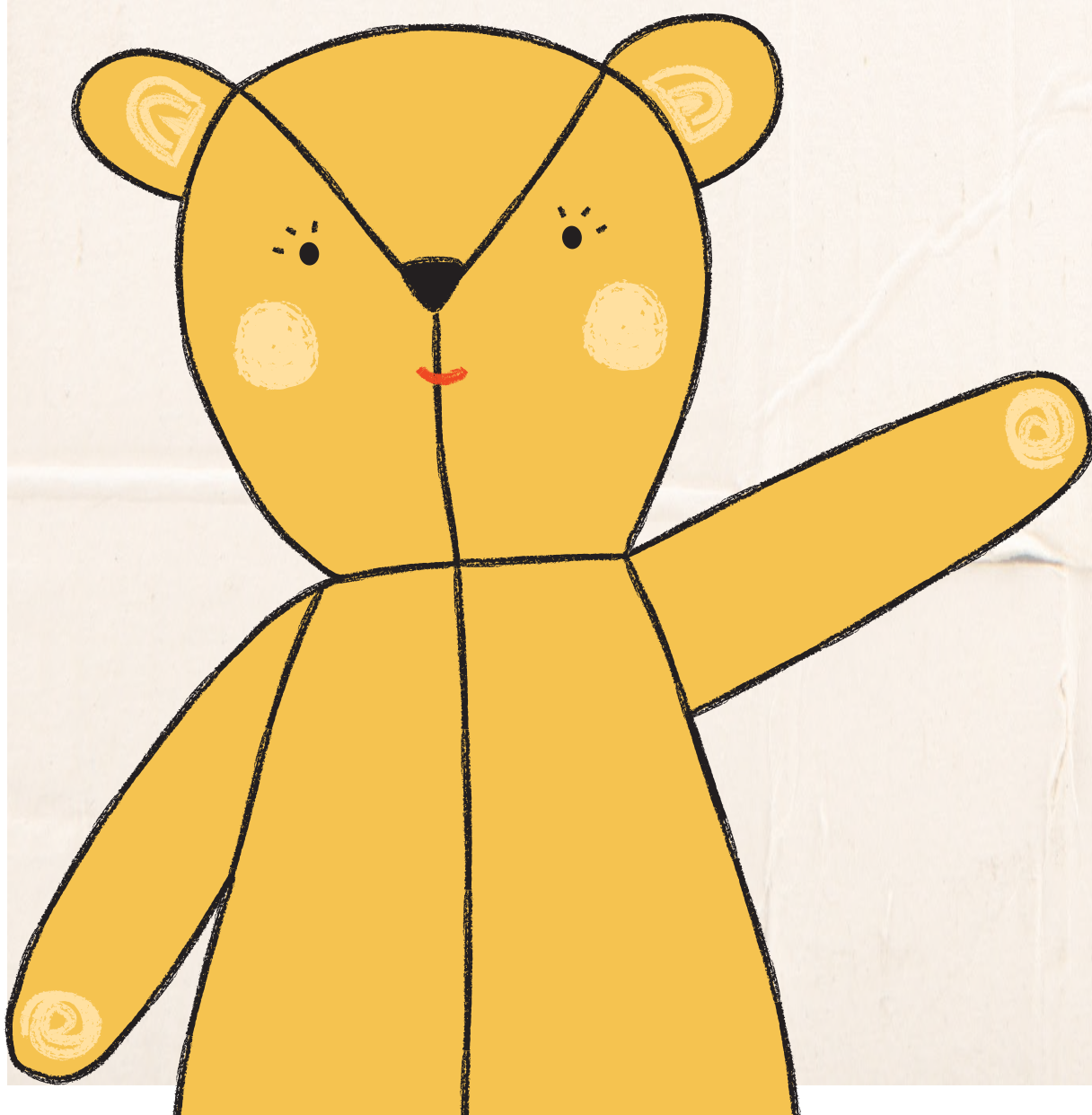


3 In one motion, rotate your wrist and flick your hand out to finish with your palm facing outwards.



THANK YOU

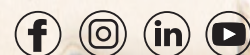
Using your dominant hand, bring your hand so your fingertips are touching your chin. In one motion, move your hand forward.



MAKING FRIENDS

For further information about Deaf Children Australia
deafchildrenaustralia.org.au/buildingbridges

03 9539 5300 or email
communications@deafchildren.org.au



BUILD ING BRIDGES

Deaf
Children
Australia.

Deaf Children Australia uses the term 'deaf' to refer to all degrees and types of hearing loss. Revised 2019 - Copyright © Deaf Children Australia 2019