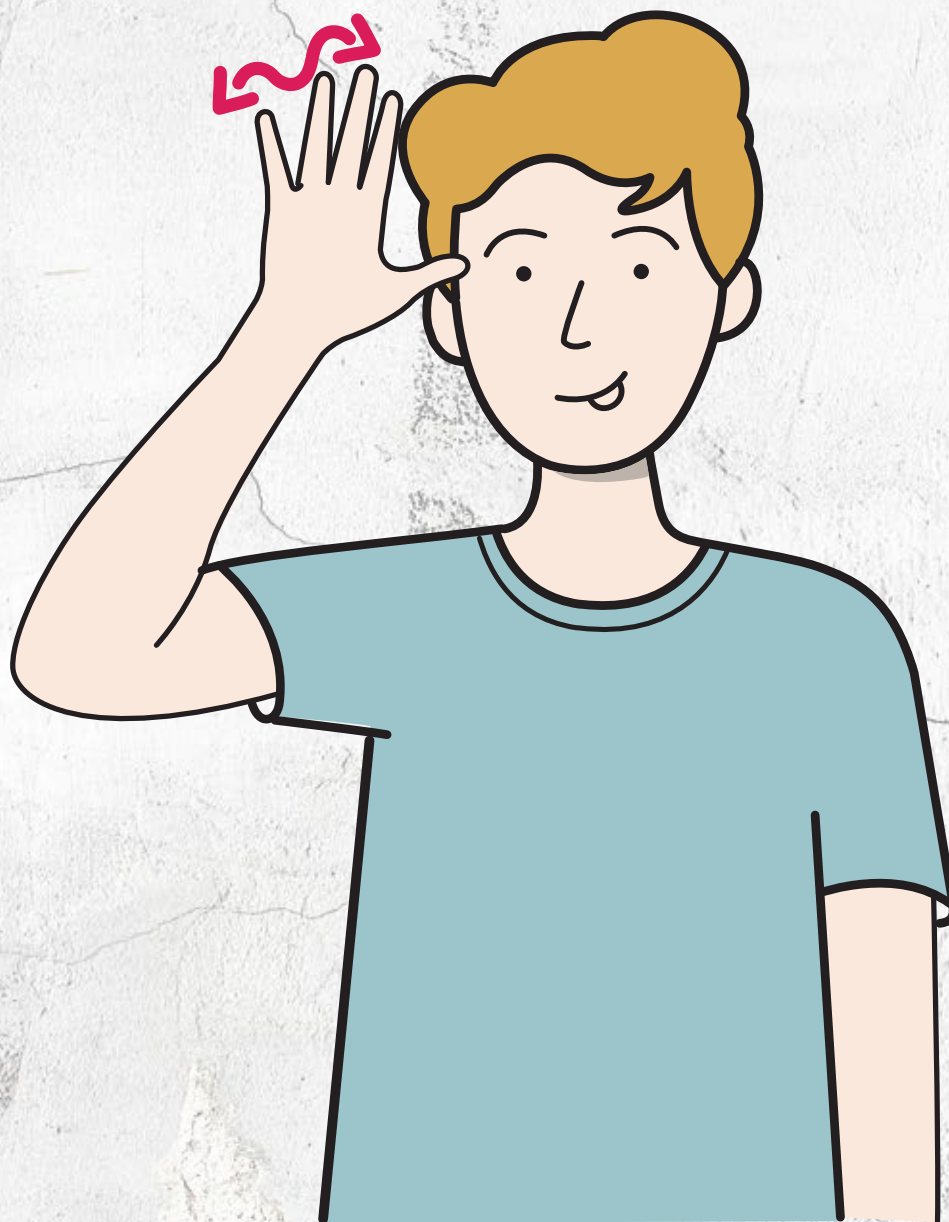


# BUILD

INCLUSIVITY



For further information about  
Deaf Children Australia  
[deafchildrenaustralia.org.au/buildingbridges](https://deafchildrenaustralia.org.au/buildingbridges)

03 9539 5300

[communications@deafchildren.org.au](mailto:communications@deafchildren.org.au)



**BUILD  
ING  
BRIDGES**

Deaf  
Children  
Australia.

Deaf Children Australia uses the term 'deaf' to refer  
to all degrees and types of hearing loss. Revised  
2025 - Copyright © Deaf Children Australia 2025

## SILLY

NO. 6

Make a **spread handshape** with your  
dominant hand, palms facing away from you  
and fingers pointing upward. Place your  
thumb on your temple and wiggle your  
fingers back and forth at different intervals.